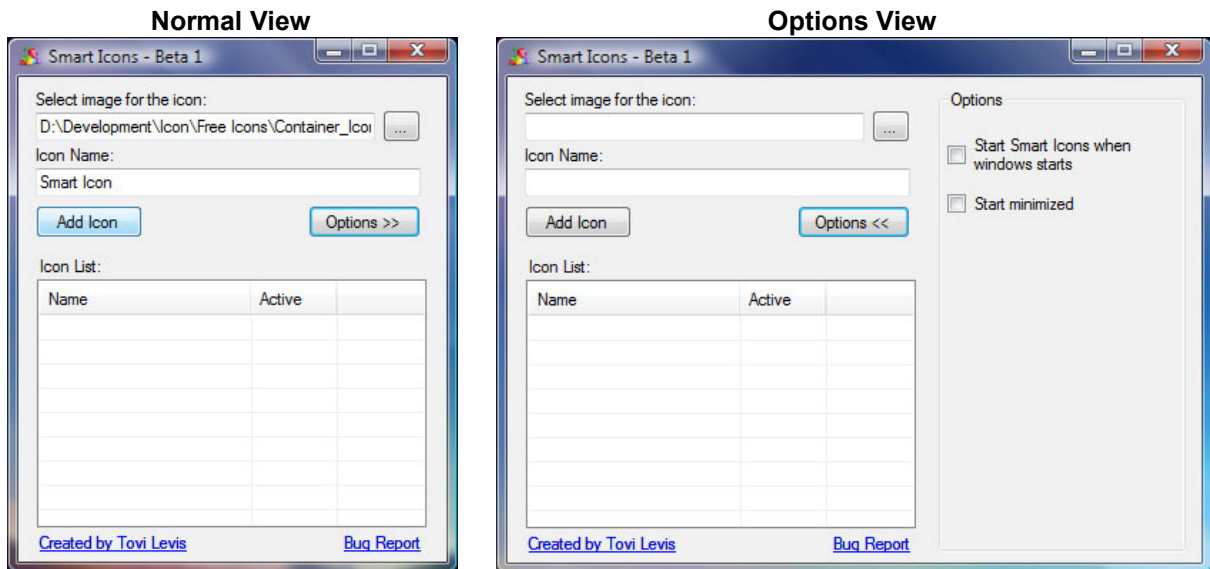
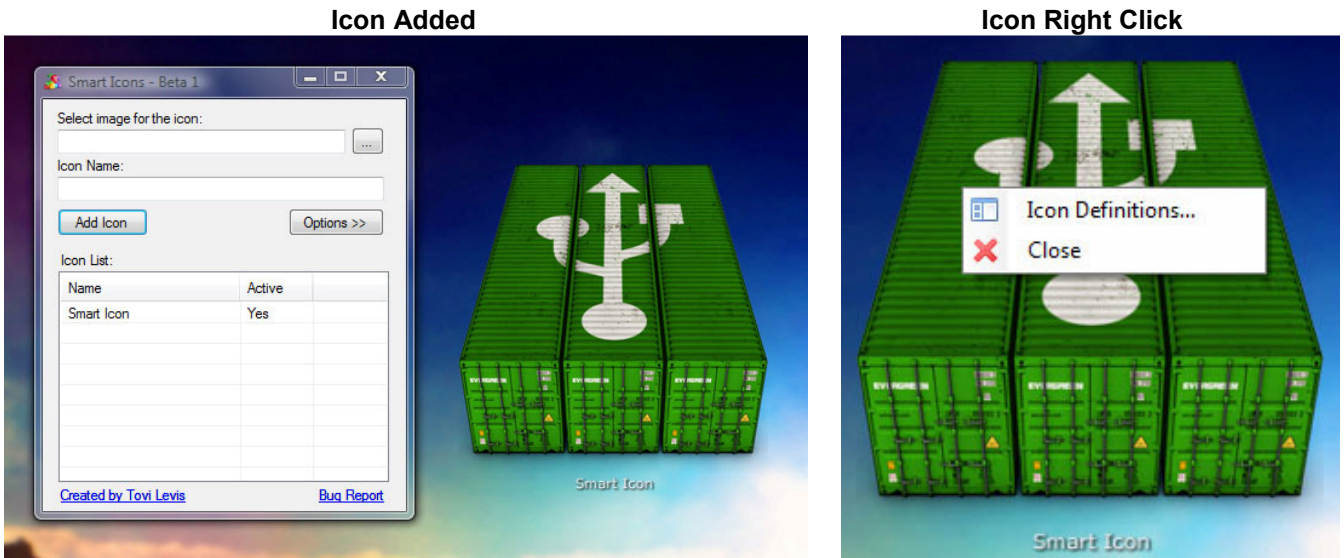


Smart Icons Beta 1



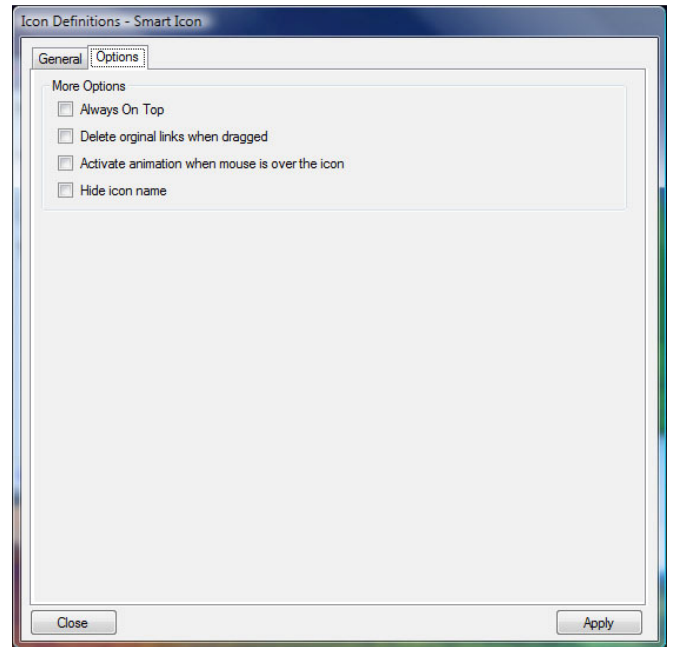
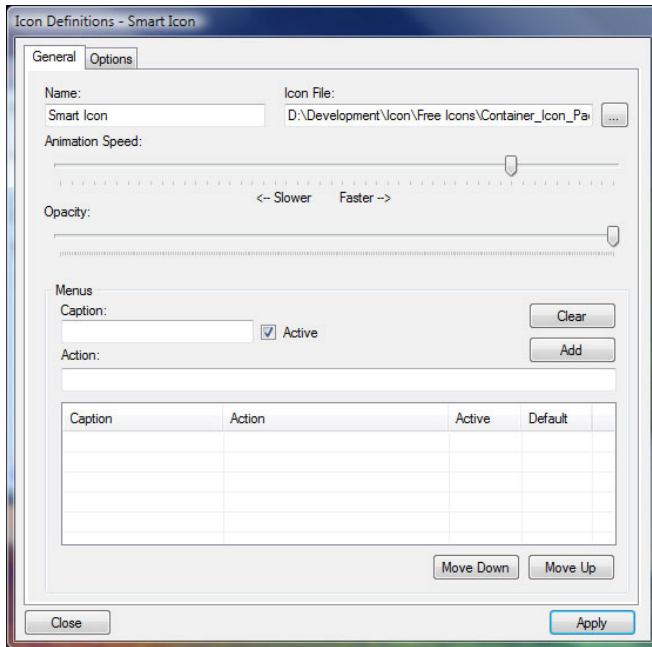
In the main window you can add new icons, activate/deactivate icons by right clicking in the icon list and delete icons from the list. The options section allow you to run Smart Icons when Windows starts and start the program at minimized mode (only at the systray).

Smart Icons allow you to add any PNG 24-bit file or SI files as your icons.



To view the icon definitions window double click the icon or click "Icon Definitions..." from the icon menu.

Smart Icons allow you to drag any file or folder to the icon and create a menu entry at the icon menu.



Icon Definitions - General

In the Icon Definitions window you can modify the icon parameters such as name and icon file.

Animation Speed: Control the animation speed of and si file if animation is available.

Opacity: Change icon opacity.

Menus:

Type caption for the menu entry and action to execute (file/folder location or cmd commands). The syntax for cmd command is: "command: ping google.com" (without the quotation marks). If you choose to enter a cmd command you can use the following reserved variables:

%si_input% - Popup an input dialog and replace the variable with your input.

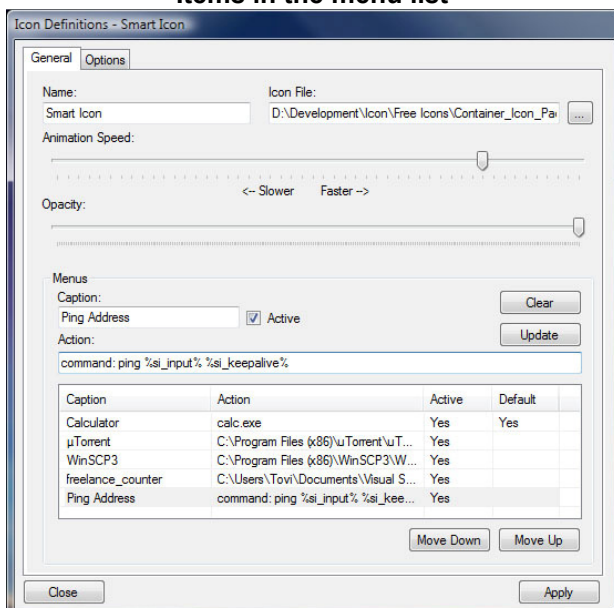
%si_keepalive% - Leave the command prompt open after the command was executed.

Example:

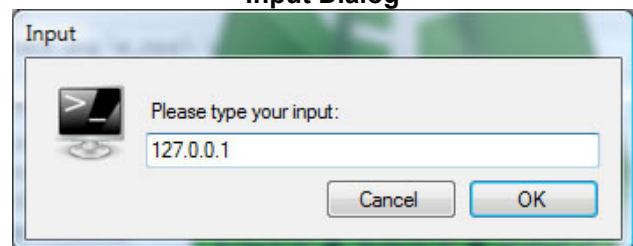
command: ping %si_input% %si_keepalive%

That command will ask you for an input (ip address or url) to ping.

Items in the menu list



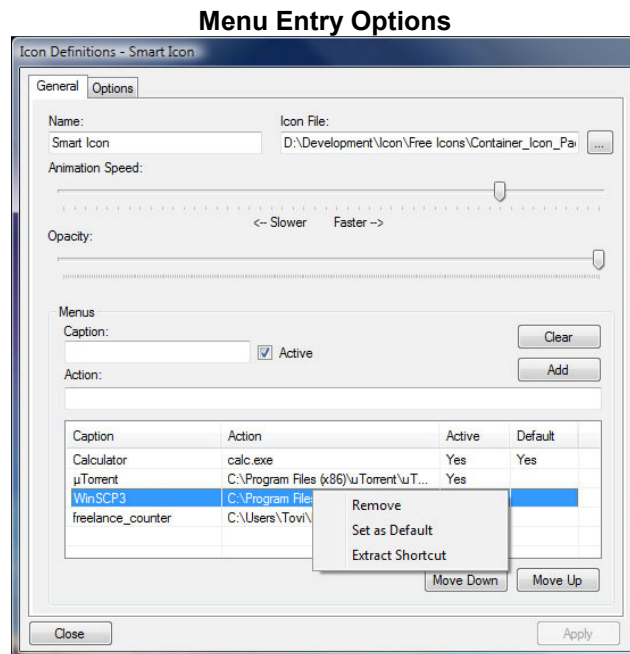
Input Dialog



To edit menu entry double click on it in the list and click Update when done.

Right click on menu entry will allow you to set the selected entry action as a default action for the icon. that means that double click on the icon will execute the default action.

If your entry is a link (dragged *.lnk file) you can click Extract Shortcut and Smart Icons will recreate the link at the original location.



Icon Definitions - Options

The options section enables you some extra features:

Always On Top - Will keep the icon on top.

Delete original links when dragged - Automatically delete the lnk file when you drag it to the icon

Activate animation when mouse is over the icon - Play the icon animation (if available) only when the mouse moves over the icon.

Hide icon name - Hide the icon name that displayed at the bottom of the icon.